

ODYSSEY[®] BATTERY

ODS-AGM28 (PC925L)

Technical Data Sheet

Battery Type

AGM with Thin Plate Pure Lead (TPPL). Advanced dual-purpose battery for engine start and deep-cycle use

Power & Performance

Voltage	12V
Capacity (20-hour rate)	28Ah
Capacity (10-hour rate)	27Ah
Cold Cranking Amps (CCA, SAE J537)	330A
PHCA - 5-second pulse current	900A
HCA	610A
MCA	480A
Reserve capacity	48 mins
Short circuit current (using IEC method)	2400A
Internal resistance at 20°C (using IEC method)	5 mΩ

Dimensions & Weight

Length	168 mm
Width	175 mm
Height (to top of terminals)	119 mm
Height Container	127 mm
Weight	10.8 kg

Temperature

Operating Temperature Range	-40°C to +50°C
Optimum Storage Temperature	+20°C

Accreditations

The management systems governing the manufacture of this product are ISO 9001 and ISO 14001 certified.

Charging & self-discharge

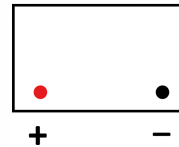
Type of charging curve	IUU
Charge voltage @+20°C	14.4V to 14.8V
Self-discharge per month at +20°C	1.25%
Self-discharge per month at +40°C	5%

Fitting, handling & storage

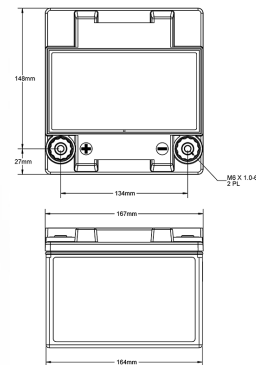
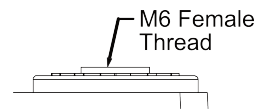
Can be mounted or stored in any orientation except inverted.
2-years storage life at +20°C without charging, or until the Open Circuit Voltage (OCV) is <12.6V or <2.10Vpc, whichever occurs first.
Classified as non-spillable and approved as non-hazardous cargo for ground, sea and air transportation in accordance with the requirements of IMDG (International Maritime code for dangerous Goods) and ICAO (International Civil Aviation Organisation).



Terminal Position



Terminal Type



ODS-AGM28
LEFT POSITIVE
FEMALE TERMINALS

PDF Generated at <https://eu.odysseybattery.com> 17/06/2021 15:06:58
Information correct at time of exporting PDF. Please check website for updates.



EnerSys World Headquarters
2366 Bernville Road
Reading, PA 19605, USA
Tel: +1-610-208-1991 /
+1-800-538-3627

EnerSys EMEA
EH Europe GmbH
Baarerstrasse 18
6300 Zug,
Switzerland

EnerSys Asia
152 Beach Road
Gateway East Building #11-08
Singapore 189721
Tel: +65 6508 1780