

Descripción general del producto



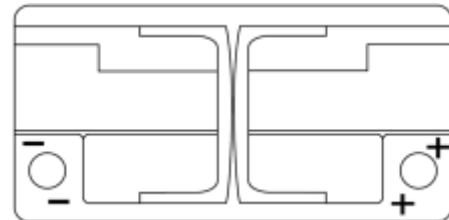
Baterías para Coches

AGM EK950



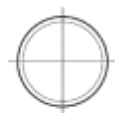
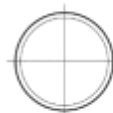
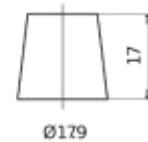
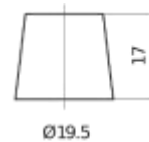
Referencia comercial	EK950
Technology	AGM
EAN/GTIN	3661024035743
Voltaje	12 V
Capacidad	95 Ah
CCA (A)	850 A
Longitud	353 mm
Anchura	175 mm
Altura	190 mm
Tamaño recipiente	L05
Esquema (Polaridad)	ETN 0
Tipo de terminal	EN taper post
Talón	B13
Peso (sujeto a variaciones)	26.10 kg

Esquema (Polaridad)



Tipo de

Talón



Positive Terminal
5 notches

Negative Terminal



<https://bateriasweb.com/>