

## Descripción general del producto



Baterías para Coches

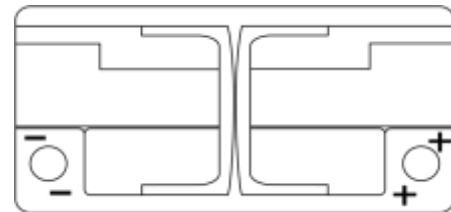
### Premium EA1000



Referencia comercial	EA1000
Technology	Flooded
EAN/GTIN	3661024034258
Voltaje	12 V
Capacidad	100 Ah
CCA (A)	900 A
Longitud	353 mm
Anchura	175 mm
Altura	190 mm
Tamaño recipiente	L05
Esquema (Polaridad)	ETN 0
Tipo de terminal	EN taper post
Talón	B13
Peso (sujeto a variaciones)	22.60 kg

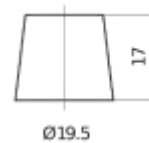
#### Esquema (Polaridad)

Tipo de

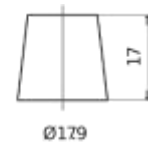


terminal

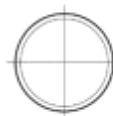
Talón



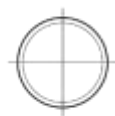
Ø19.5



Ø179



Positive Terminal  
5 notches



Negative Terminal



<https://bateriasweb.com/>